



GLOBAL CHILD FORUM | ACTIONLAB 3

ACHIEVING POSITIVE CHANGE FOR  
CHILDREN'S LIVES IN SUPPLY CHAINS

# Summary of Discussions – Key Takeaways





# Executive summary

KEY TAKEAWAYS FROM DISCUSSIONS AT GLOBAL CHILD FORUM 2024:  
ACTIONLAB 3 - ACHIEVING POSITIVE CHANGE FOR CHILDREN'S LIVES IN SUPPLY CHAINS

## IMPACT ON CHILDREN/UNDERSTANDING ROOT CAUSES

- *Challenge:* there is a high cost in collecting data and it isn't always reliable. Poverty is key factor.
- *Solution:* Make social issues/performance part of sourcing selection in addition to price. Increase awareness of unintended consequences of due diligence actions – include impact on children.

## ENGAGING UPSTREAM STAKEHOLDERS

- *Challenge:* complex chains can lead to lack of mutual relationships between buyer and supplier; inability to exercise leverage or understand the issues properly.
- *Solution:* shift to value driven motivation – "love to do it" instead of "have to do it". Bringing together supply chain partners from different tiers to explore challenges from different perspectives and find joint solutions is a key recommendation.

## TAKING ACTION IN COLLABORATION WITH OTHERS

- *Challenges:* Lower supply chain players have limited power to engage. Purchasing practices without consideration for cost for/capacity of supplier lead to negative consequences.
- *Solutions:* Build capacity internally and work with local CSOs. Involve the board to get buy-in and awareness of importance of engaging with children as stakeholders. Get industry-organisations on board.





ACHIEVING POSITIVE CHANGE FOR CHILDREN'S LIVES IN SUPPLY CHAINS

# The Challenges

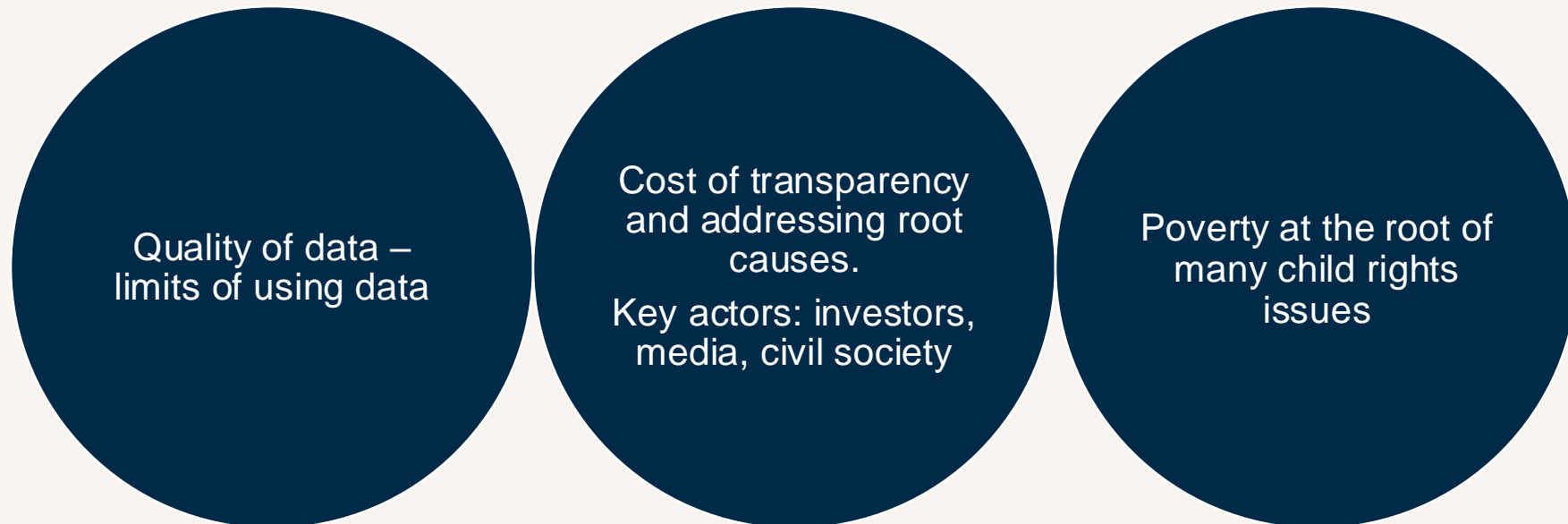
Summary of discussions and responses from participants

# Topic: Material impacts on children in supply chains

UNICEF | KEY TAKEAWAYS CHALLENGES (MORNING SESSION)

*How can companies better understand root causes of child rights violations to better address them?*

*What levers do companies have to engage with poverty and other societal issues that manifest themselves in child labour and other risks?*



# Topic: Engaging with upstream stakeholders

SAVE THE CHILDREN | KEY TAKEAWAYS CHALLENGES (MORNING SESSION)

*How can companies engage with stakeholders and other actors to better understand and track child rights impacts?*

*How do companies partner with civil society to involve children and local communities as stakeholders to inform human rights due diligence processes from a child rights perspective?*



## Additional notes/keep in mind:

- Price for social – not only climate
- Educate our customers
- Risk in the countries
- Share experiences with the sector

# Topic: Taking action on child rights in complex and indirect supply chains

THE CENTRE FOR CHILD RIGHTS & BUSINESS | KEY TAKEAWAYS CHALLENGES (MORNING SESSION)

*How can companies address child labour in complex and indirect supply chains by taking on responsibility together with various actors along the supply chain?*










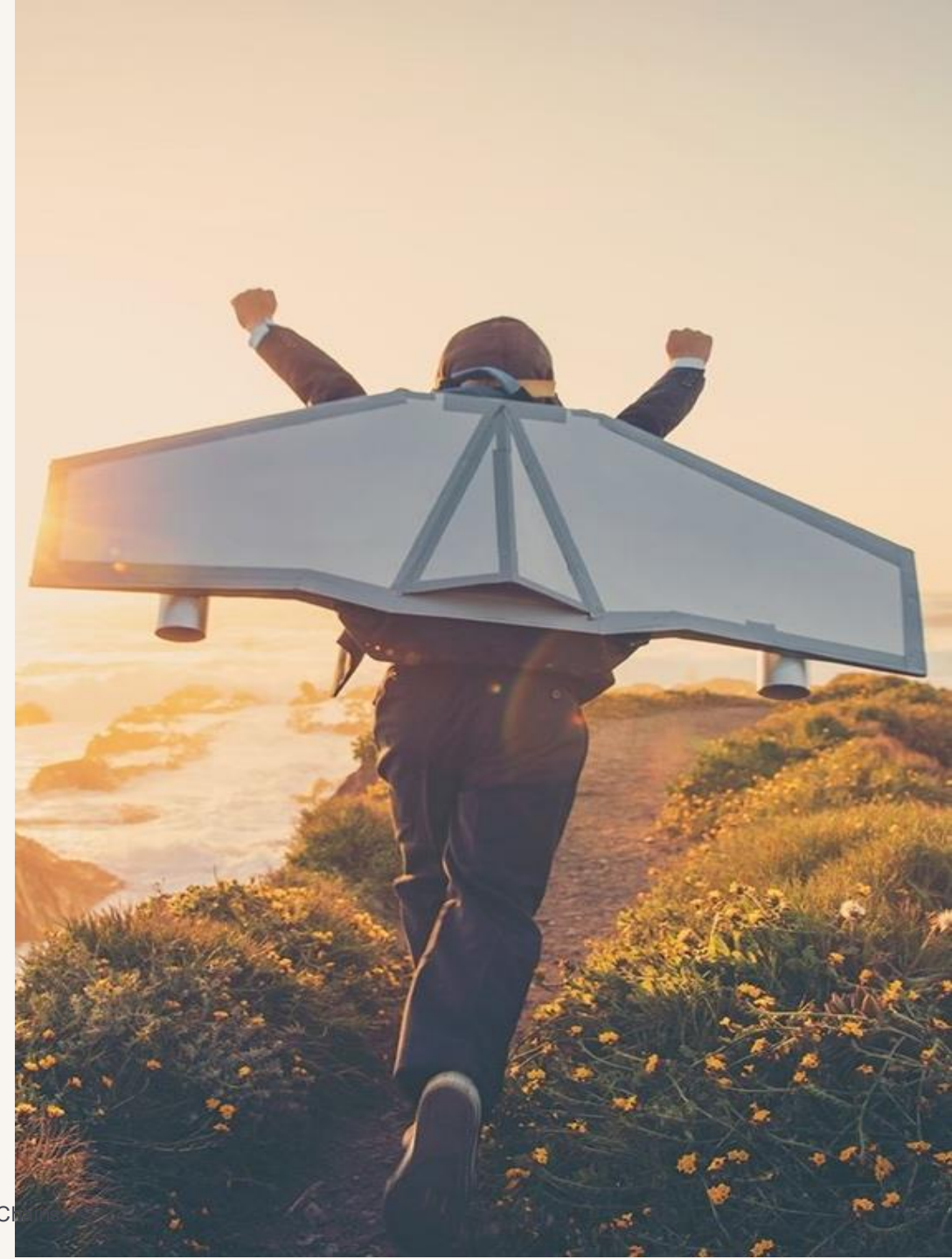
# Menti summary

**Question: What is the main challenge to improve your organisation's impact on children's lives in supply chains?**

37 participants / 57 responses

## Overall summary of responses:

-  ***Lack of transparency***
-  ***Complex supply chains***
-  ***Need for collaboration***
-  ***Data reliability issues***
-  ***Limited leverage***



# Menti summary – grouped responses

WHAT IS THE MAIN CHALLENGE TO IMPROVE YOUR ORGANISATION'S IMPACT ON CHILDREN'S LIVES?

## Transparency

- Transparency
- Transparency
- Lack of transparency
- Transparency/insight into all tiers, and ability to influence as a single actor
- The multitude of tiers and thus limited visibility
- Transparency
- Transparency, measurability
- Visibility
- The challenge to have the perspective with all the different suppliers who are also changing quite frequently - and to get the transparency
- As an Investor the organisations might be afraid to share actual and real data as we might need to disinvest due to sustainability criteria. Instead of giving us the benefit of the doubt and work together



# Menti summary – grouped responses

WHAT IS THE MAIN CHALLENGE TO IMPROVE YOUR ORGANISATION'S IMPACT ON CHILDREN'S LIVES?

## Supply chain complexity

- Long and complex supply chain
- supply chain transparency and robust data collection
- Understanding the whole value chain
- Connecting to those in the early stages of supply chain to identify the root cause
- Lack of transparency/information from suppliers, lack of resources to do thorough due diligence work, lack of commitment
- The negative perception of instances of child labour in supply chains. Leads to greenwashing and low willingness to look for solutions. If we remove the stigma, we can invest into improving outcomes
- Many supply chains with high complexity and missing transparency to low tiers
- The largest risks are far up in the supply chain with no direct business influence
- The black and white perception of the challenges create reputational risks when dealing with the nuances

# Menti summary – grouped responses

WHAT IS THE MAIN CHALLENGE TO IMPROVE YOUR ORGANISATION'S IMPACT ON CHILDREN'S LIVES?

## Collaboration

- Collaboration across borders
- Collaboration with local cooperatives when it's about farming
- Convergence of industry/ cross sectoral approach
- Lack of cooperation and question about financing. Who is going to pay?
- Cross industry/ sectoral collaboration

- Application of legislation/compliance with all stakeholders
- Demand from clients
- Secure a shared view of data. Long-term playing rules is key for institutional investments

## Engagement & leverage

- Two-way meaningful engagement
- Leverage
- Engage governments
- Engagement with national actors
- Leverage
- Real world impact

# Menti summary – grouped responses

WHAT IS THE MAIN CHALLENGE TO IMPROVE YOUR ORGANISATION'S IMPACT ON CHILDREN'S LIVES?

Leadership	Traceability	Data
<ul style="list-style-type: none"><li>• It is all about leadership</li><li>• Lack of investments and leadership on prioritising the issue</li><li>• Go beyond Due Diligence</li><li>• Building capacity</li><li>• Lack of priorities</li><li>• Structural issues</li></ul>	<ul style="list-style-type: none"><li>• Traceability</li><li>• Traceability</li><li>• Reliability/credibility of third-party audits for data</li><li>• Traceability</li><li>• Measurability</li></ul>	<ul style="list-style-type: none"><li>• Data Knowledge</li><li>• Access to reliable data</li><li>• Education and measurement. Climate takes too much space</li><li>• Media</li><li>• Data can't drive change itself</li></ul>

# Menti summary – grouped responses

WHAT IS THE MAIN CHALLENGE TO IMPROVE YOUR ORGANISATION'S IMPACT ON CHILDREN'S LIVES?

## Child rights reporting

- Economic vs human rights issues, no incentive to do child rights reporting, varying ways of social impact measurement, not enough focus and education on child labour impacts
- Acknowledging the issues that surround children's lives within the supply chain
- Poverty in some of the countries

- A proper knowledge of children's rights, which can be affected in a global supply chain?
- Listen to children and families closest to the problem

## Local partnerships

- Work with partners
- Scale up initiatives
- Relying on robust local partnerships build up trust and share value based KPI's





ACHIEVING POSITIVE CHANGE FOR CHILDREN'S LIVES IN SUPPLY CHAINS

# The Solutions

Summary of discussions and responses from participants

# Topic: Material impacts on children in supply chains

UNICEF | KEY TAKEAWAYS SOLUTIONS (AFTERNOON SESSION)

*How can companies engage with root causes for systemic child rights deprivations?*

*Which collaborations need to be developed to engage with root causes strategically?*

Make social issues/  
performance part of  
sourcing selection in  
addition to price

Importance of living  
wages for adult  
workers!

Businesses need to  
be aware of  
unintended  
consequences on  
children of due  
dilligence actions

Long-term  
commitment – buyer.  
Narrative to support to  
counter short-term  
narravites.  
Time horizons

# Topic: Taking action on child rights in complex and indirect supply chains

THE CENTRE FOR CHILD RIGHTS & BUSINESS | KEY TAKEAWAYS SOLUTIONS (AFTERNOON SESSION)

*How can companies address child labour in complex and indirect supply chains by taking on responsibility together with various actors along the supply chain?*



# Topic: Engaging with upstream stakeholders

SAVE THE CHILDREN | KEY TAKEAWAYS SOLUTIONS (AFTERNOON SESSION)

*How can companies engage with root causes for systemic child rights deprivations?*

*Which collaborations need to be developed to engage with root causes strategically?*



## **Additional notes:**

- Join forces – do it together
- Supplier engagement programme
- Dialogues
- Industry platform – knowledge
- Global level use of Global Child Forum Benchmark



# Menti summary

**Question:** What is the most pressing action you can take after this Forum to improve your organisation's impact on children's lives in supply chains?

24 participants / 34 responses

## Overall summary of responses:

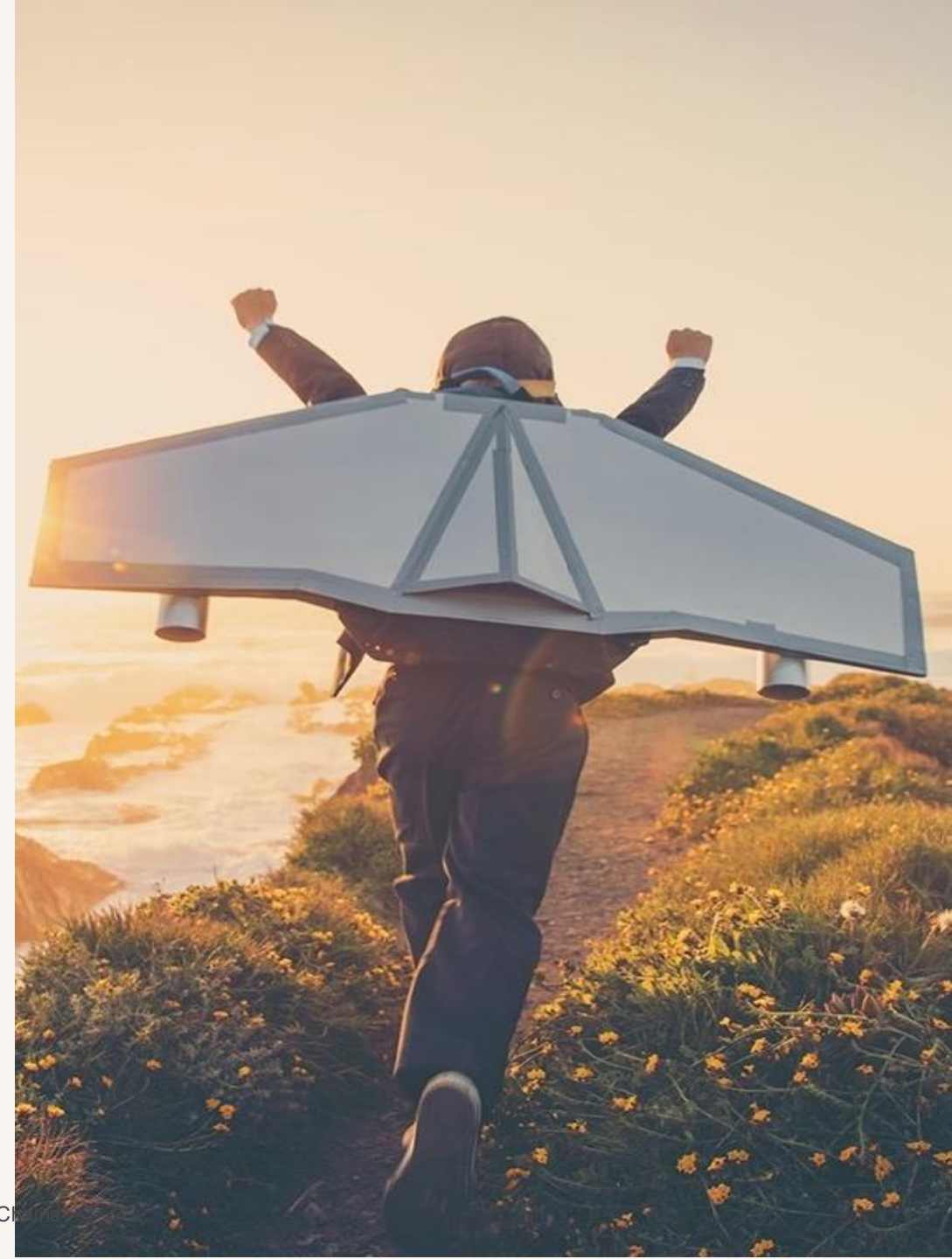
 ***Foster collaboration and partnerships***

 ***Address root causes***

 ***Ensure long-term commitment***

 ***Increase transparency and dialogue***

 ***Engage leadership and stakeholders***



# Menti summary – grouped responses

WHAT IS THE MOST PRESSING ACTION YOU CAN TAKE AFTER THIS FORUM TO IMPROVE YOUR ORGANISATION'S IMPACT ON CHILDREN'S LIVES?

## Collaboration

- Collaboration
- Collaborate for transition
- Share and exchange perspectives
- Engage in cooperation across value chain
- Collaboration
- Collaborate with experts on the ground
- Collab with national actors on child rights
- Continue the discussion with a huge number of new contacts

## Leadership involvement

- Partnerships and high-level buy-in
- Long term commitment
- Bring board members to the field
- Accountability is key
- Make top executive management part of the discussion and ownership
- Motivate others in the organisation to put the topic higher on the agenda
- Engage your board and company leadership in addressing the problem and investing in solutions
- Goal setting on board level and cascaded down organisation
- Ensure that targets are set at Board level to drive change (top down) and create space for people across supply chains to share their needs (bottom up)

# Menti summary – grouped responses

WHAT IS THE MOST PRESSING ACTION YOU CAN TAKE AFTER THIS FORUM TO IMPROVE YOUR ORGANISATION'S IMPACT ON CHILDREN'S LIVES?

## Stakeholder engagement

- Engage with my clients to make them understand why this will benefit all of us over time
- Create ways of working to ensure implementation of code of conduct, talk to suppliers and other stakeholders
- Participate in a more permissive and nuanced dialogue around challenges, away from the black and white perception of the problems - to allow parties to move beyond them
- Develop a mechanism to involve stakeholders
- Influence and enable investor dialogues Innovate together
- engage children as stakeholders make living wage count help eradicate child labour as an advocacy
- Convene dialogue
- Develop engagements programmes with suppliers, create industry platform, training on child rights, meet human rights defenders

## Practices

- Focus on companies work with assuring living wages in their supply chain
- Purchasing practices need to be changed
- understanding root causes and building internal team capacity, understanding ways to identify and implementing the solutions
- Mapping risks based on assumptions and establish partnerships to proactively mitigate risks and improve impact

# Menti summary – grouped responses

WHAT IS THE MOST PRESSING ACTION YOU CAN TAKE AFTER THIS FORUM TO IMPROVE YOUR ORGANISATION'S IMPACT ON CHILDREN'S LIVES?

## Mindset change

- Mindset change - instead of saying "if" we have child labour, let's rather assume violations of children's rights exist in our supply chains and then actively look for them, improve traceability, etc.
- Root causes
- Increase awareness and knowledge

## Transparency

- Be more transparent in reporting both issues and solutions
- Use the Global Child index





[globalchildforum.org](https://globalchildforum.org)